

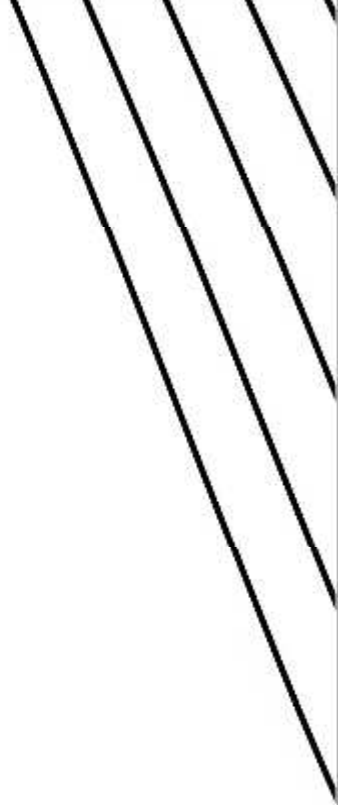
10

Hier schneiden

Hier kleben



Hier schneiden

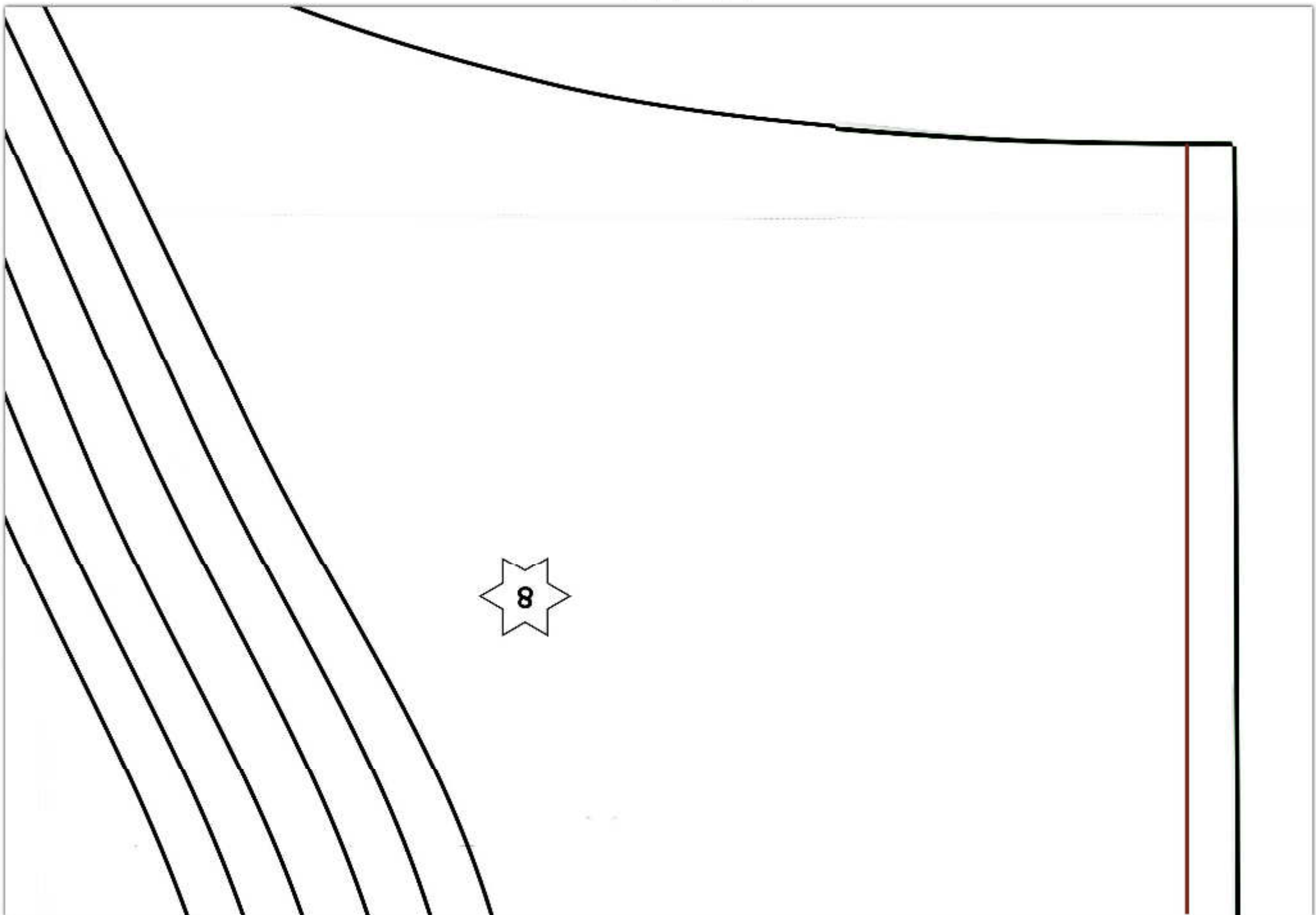


Hier kleben

Hier kleben



Hier schneiden



Bruch - Fadenlauf

Jersey-Bruch

*Easy Tails
Belana*



Rückenteil

1x im Bruch zuschneiden

68/74

80/86

92/98

104/110

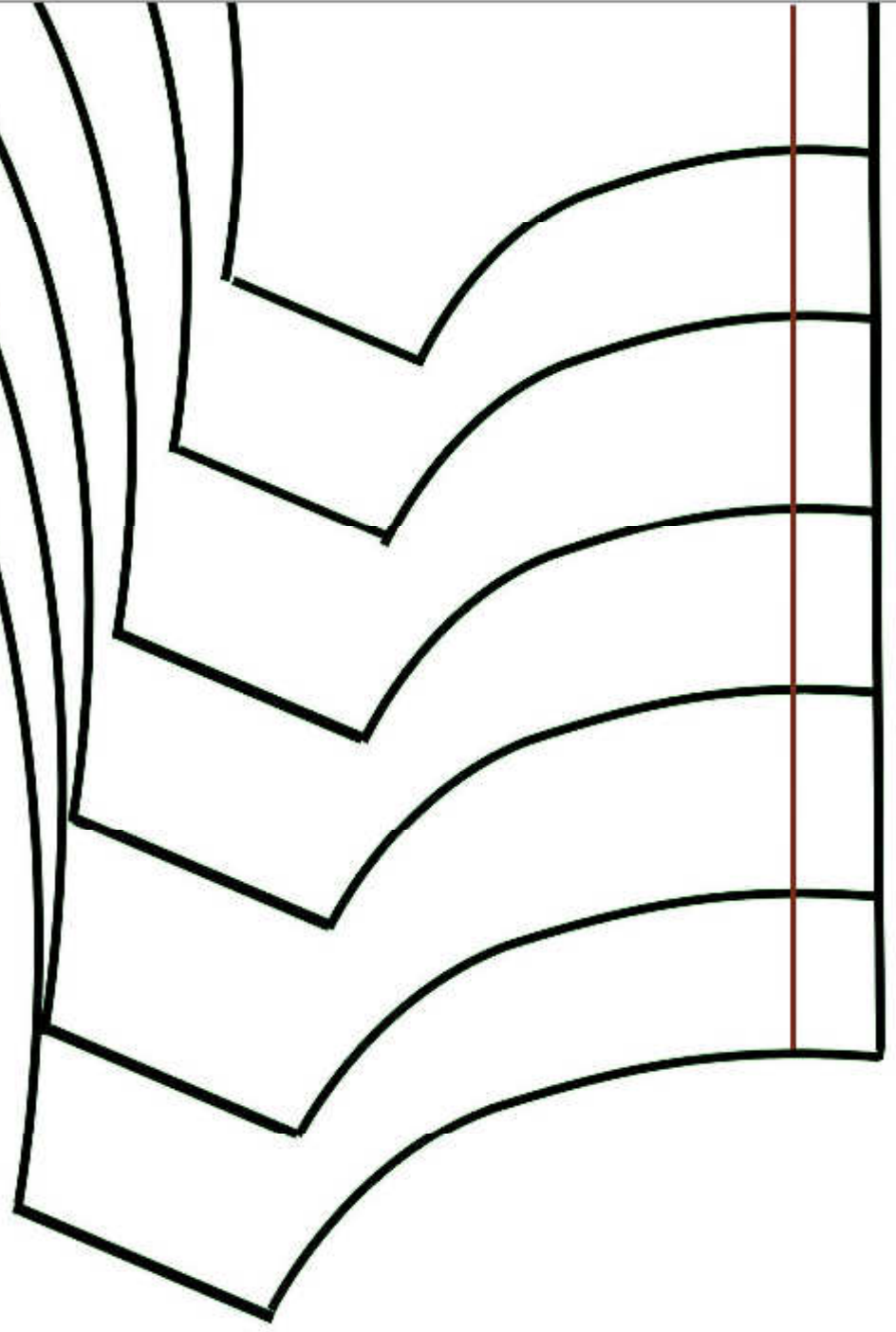
116/122

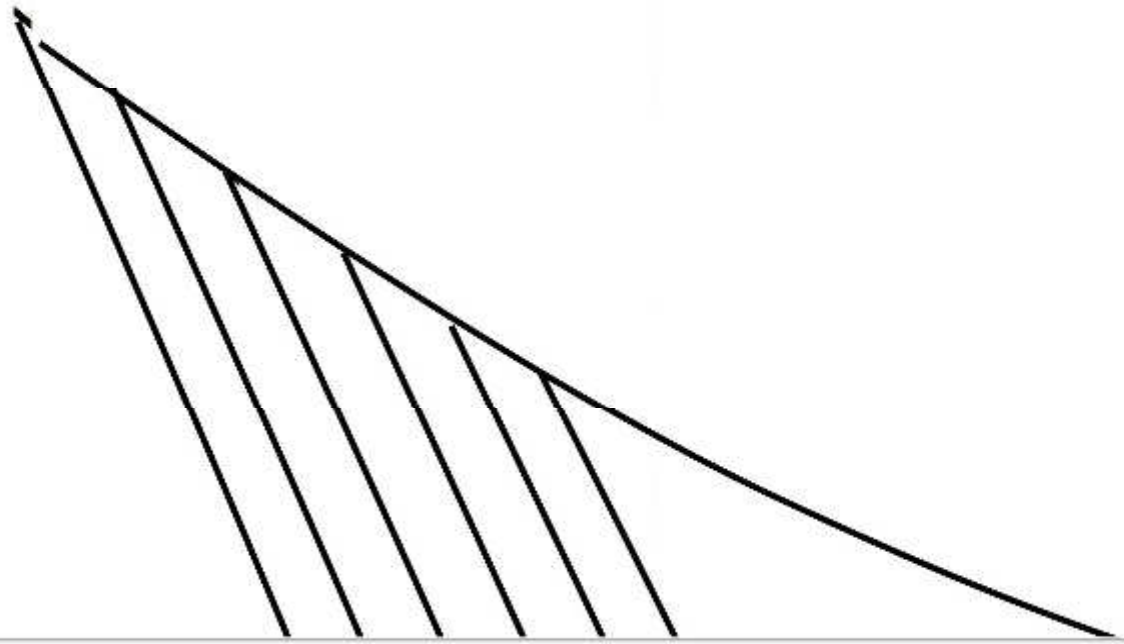
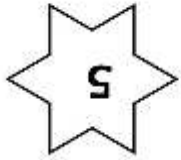
128/134



Hier schneiden

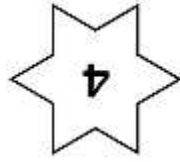
Hier kleben





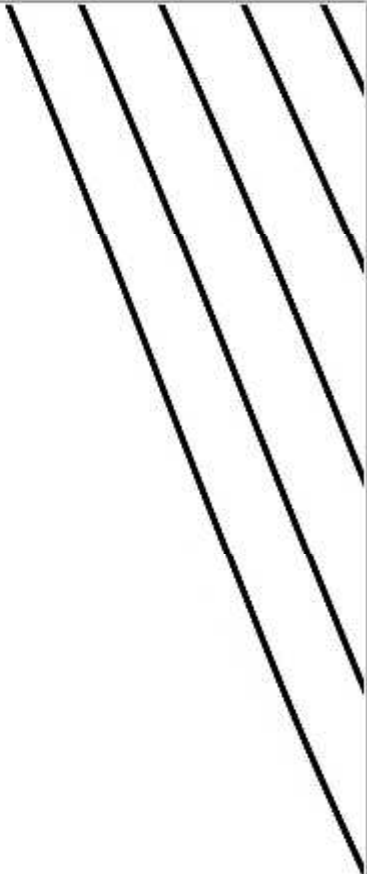
Hier schneiden

5x5
cm

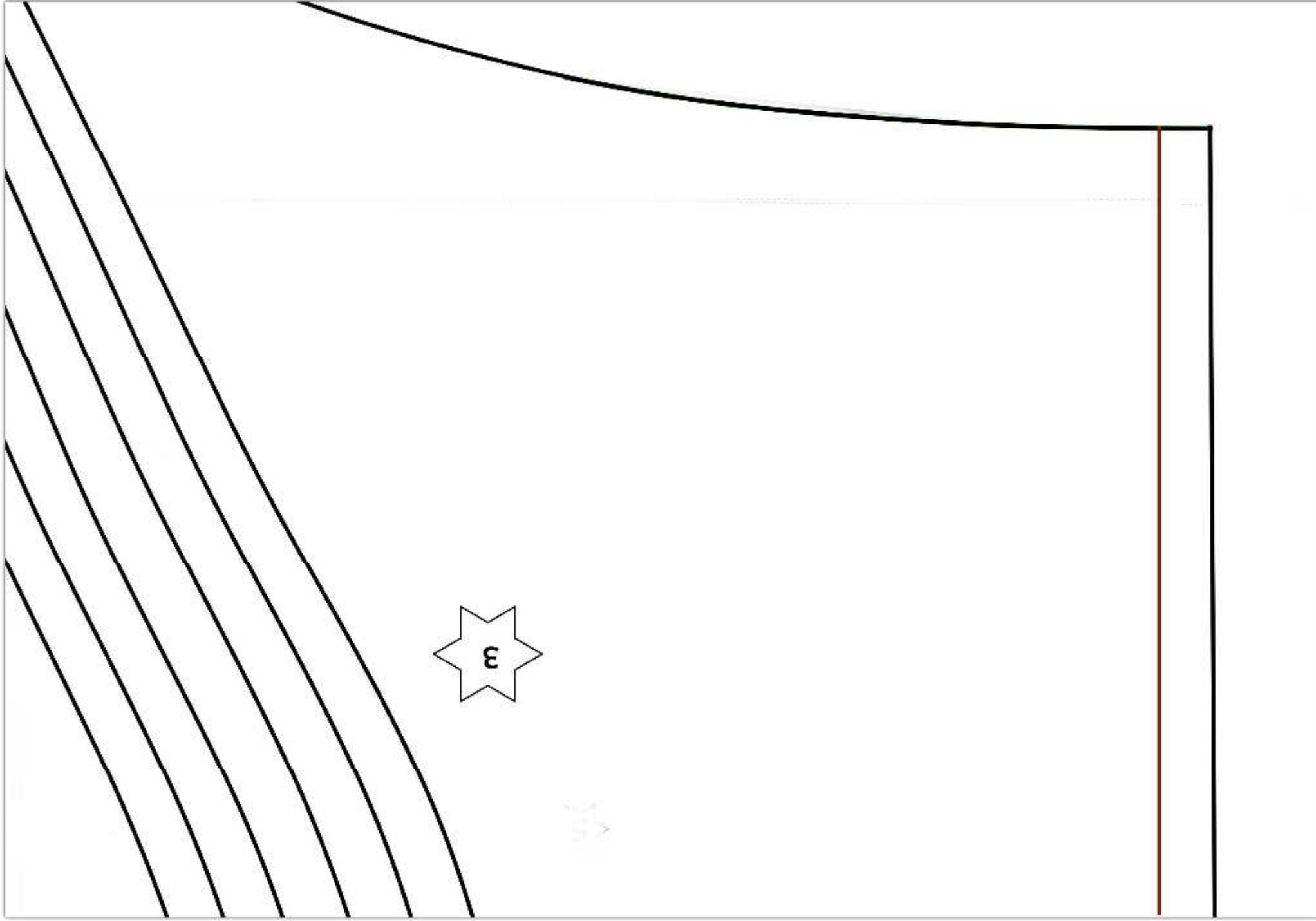


Hier kleben

Hier kleben

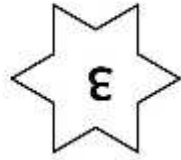


Hier kleben



Hier schneiden

Hier schneiden



3/5

Bruch / Fadenlauf

Jersey-Bruch

*Easy Tails
Belana*



Vorderteil
1x im Bruch
zuschneiden

68/114

80/86

92/98

104/110

116/122

128/134



Hier schneiden

Hier kleben

Hier bleiben

